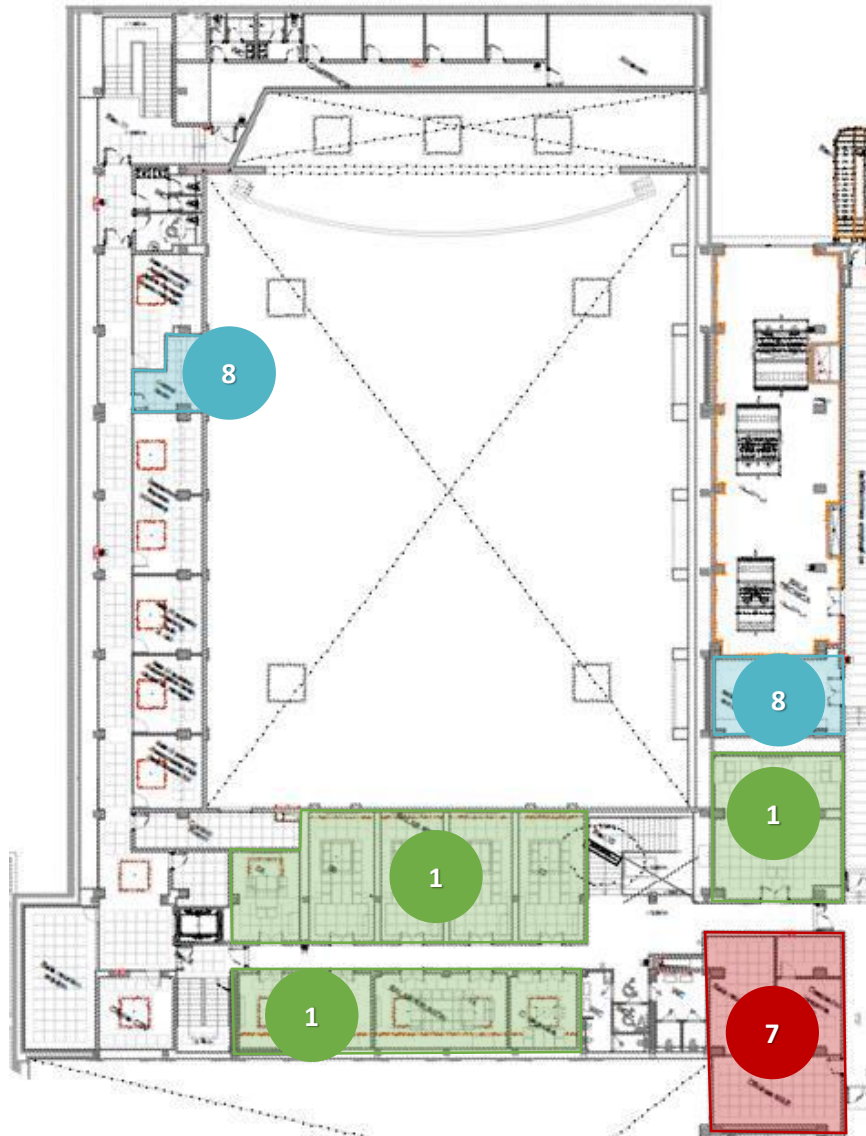


# Meetings & Events by Club Med





- 1 7 Meeting rooms : see details next pages
- 2 Welcome and break lounge :
  - 2 reception (2 position each)
  - Lounges
  - Cloakroom
  - Storage
  - Bathroom
  - Outdoor lounge
- 3 F&B facilities :
  - Catering area
  - Dish cleaning area
  - Storage
- 4 Ball room : see details next pages
- 5 Ball room lounge and break space + outdoor acces to the garden
- 6 Ball room backstage and storage area



1 9 Meeting rooms : see details next pages

7 M&E Office :  
• 1 Manager office  
• 3 Coordinators offices  
• 1 meeting room

8 2 sound & light cabins for the ball room



**M&E offer**

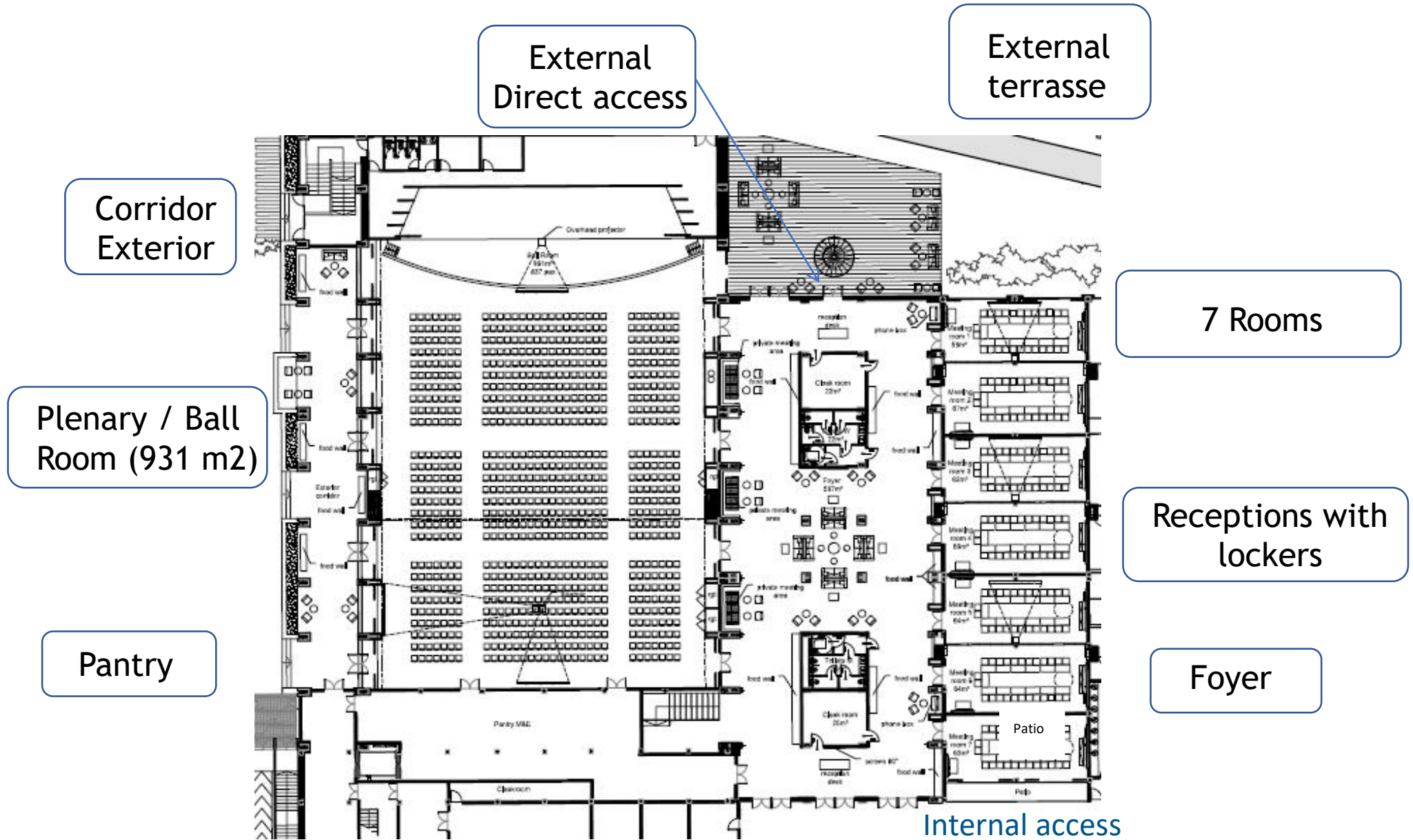


# A convention center offering various possibilities of events



- Designed with the new concept M & E (decoration, markers, technical equipment)
- Located on Two floors, main access on ground floor, by reception (accessible for PMR)
- A foyer:
  - fully equipped to welcome groups and organize coffee breaks or others events
  - 2 entrances: internal access from the reception lobby or external access with a a terrace
  - 2 receptions counters, with cloakrooms
- A plenary / Ball room (931 m<sup>2</sup>) with 2 subdivisions: enable to host conferences but also various events (shows, conferences, weddings, dinners etc...)
- 1 Reserve (121m<sup>2</sup>) located on R-1
- A pantry (193m<sup>2</sup>) with direct access to Ball Room
- 15 rooms split on 2 floors: 7 on the ground and 8 on R+1
- A business center located on the R+1

# Over view of the ground floor

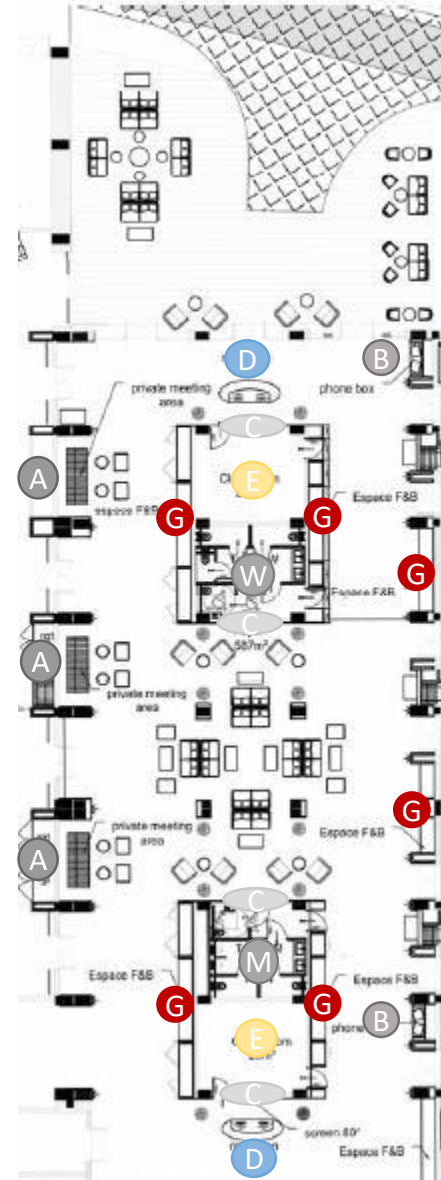
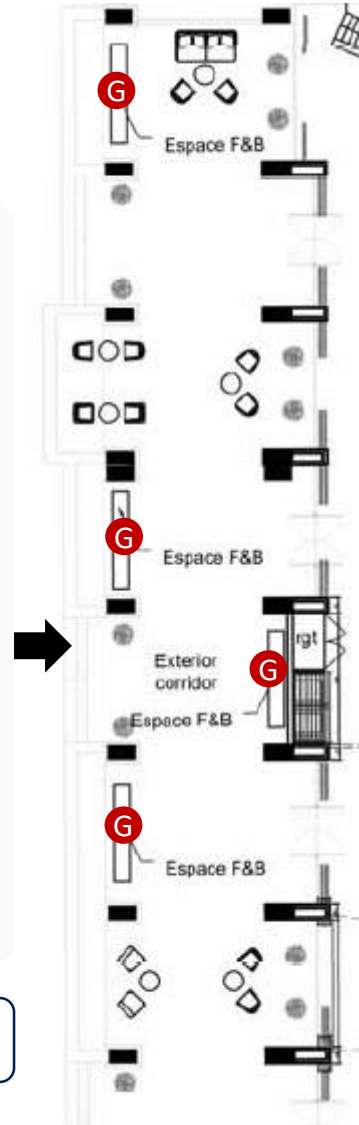


# Details of the foyer and external corridor, places to host coffee breaks & cocktails

## Exterior Corridor:

- 190 m2\*
- Standing capacity: 200 pax
- Lounges
- Various F & B points polyvalent to host material for coffee breaks, cocktails or show cooking (G)
- Gardens: 200 m2 of concrete and gardens

\* Surface with furniture



## External terrace:

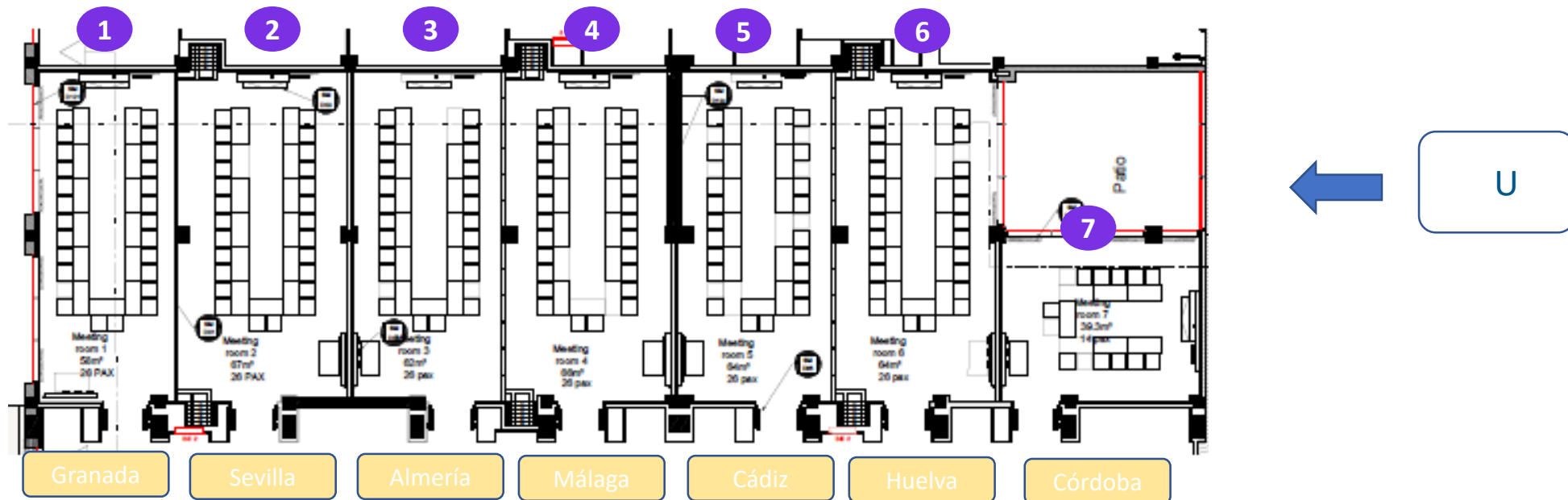
- 240 m2 \*
- Not covered, with lounges
- Standing capacity: 225 pax

## Foyer:

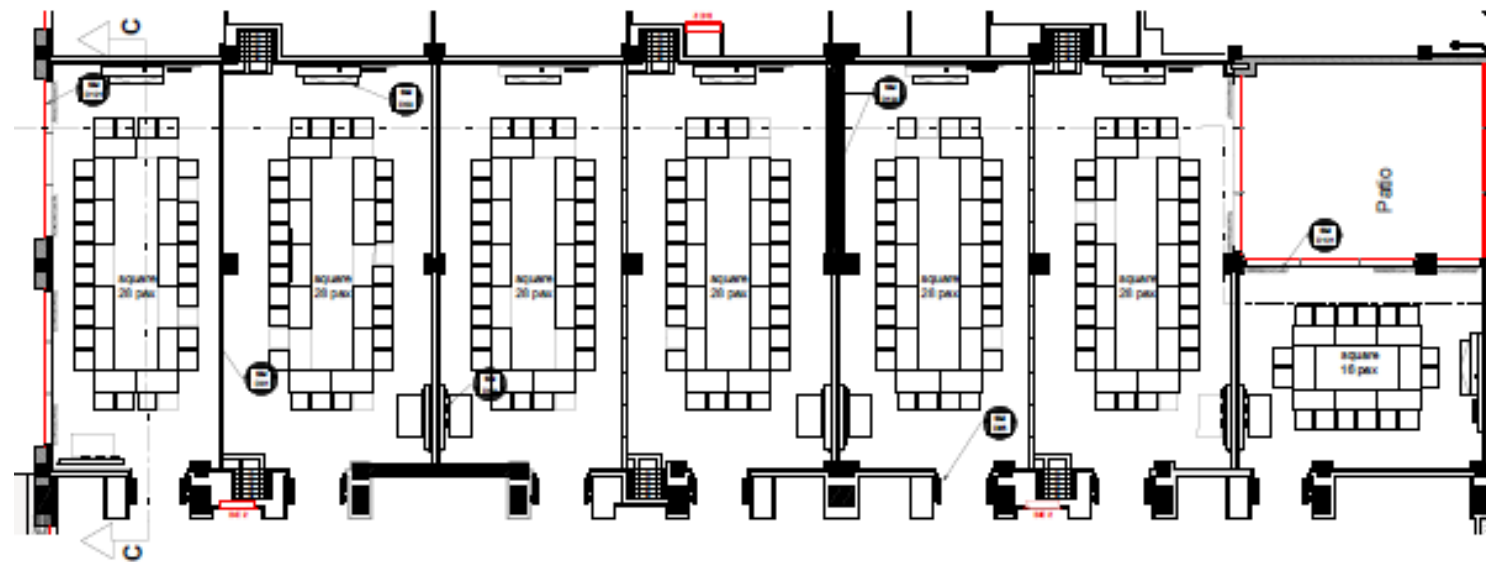
- 587 m2\*
- Capacity standing: 400 pax
- Lounges
- Private meeting spaces (A)
- Phone boxes (B)
- 4 Dynamic screens (C)
- 2 reception counters that can be used as welcome counter by the company (D)
- 2 Cloakrooms (20m2) that can be also used as storage by the company (E)
- Toilets (Women & Men)
- Various F & B points polyvalent to host material for coffee breaks, cocktails or show cooking (G) and F & B trolleys



# M & E Offer: 7 Meetings rooms on the ground floor, individual set up

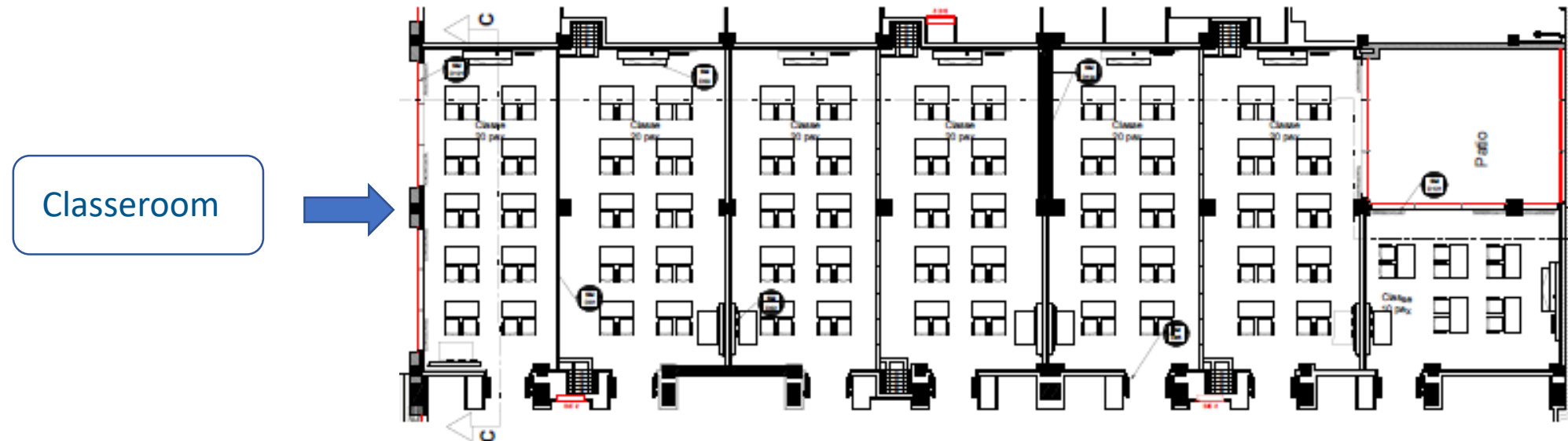
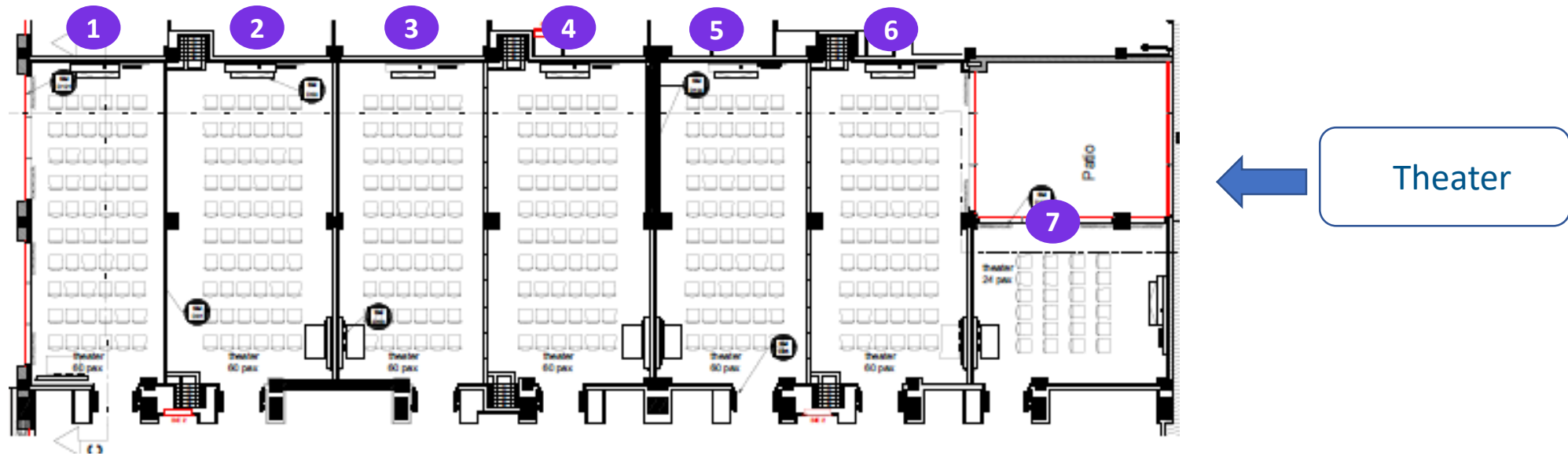


Square





# M & E Offer: 7 Meetings rooms on the ground floor, individual set up

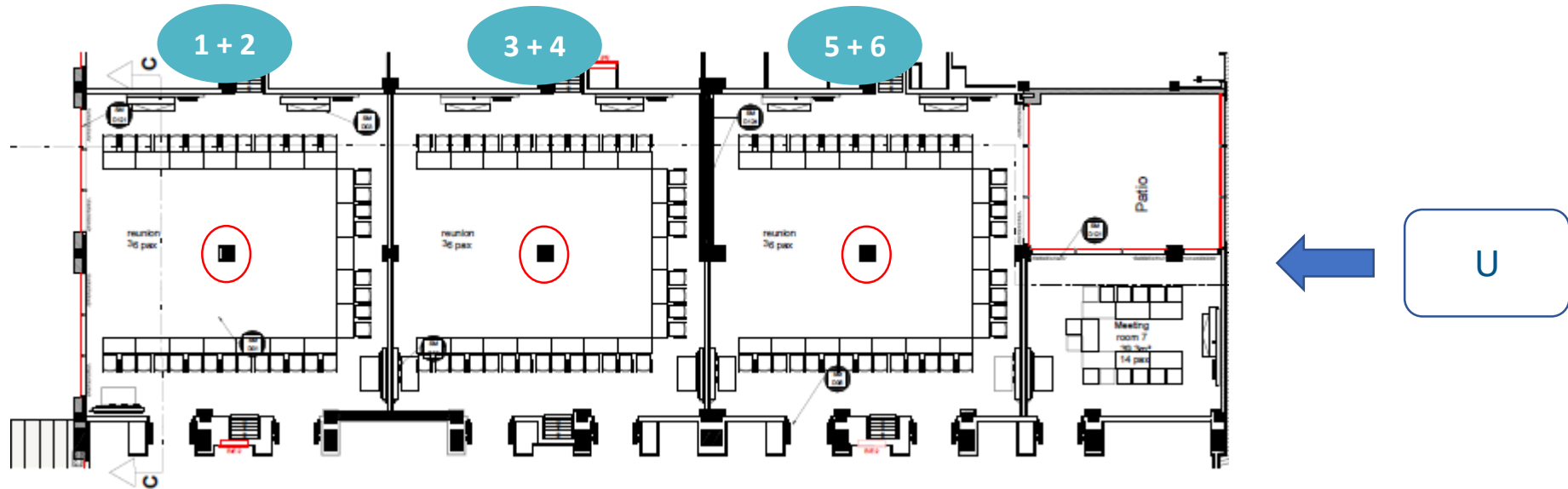




# M & E Offer: 7 Meetings rooms on the ground floor, connected set up 3 x 2 rooms



When the 2 rooms are joined together, the center pol (circled in red) will remain in between each room. Therefore, visibility of the screens will be impacted. Some places, strongly impacted, have been taken away from full capacity.



Square

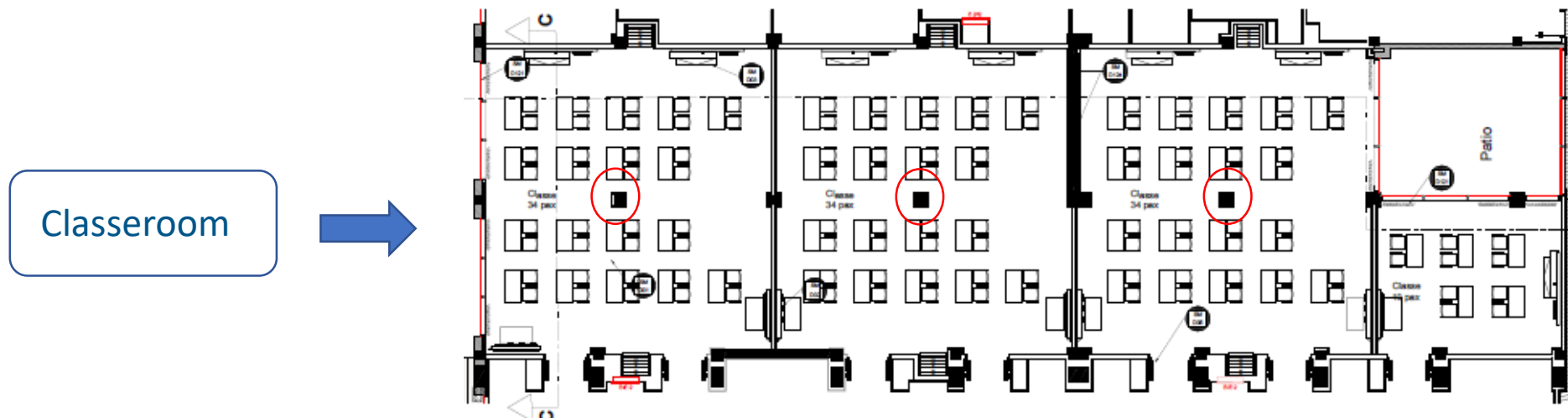
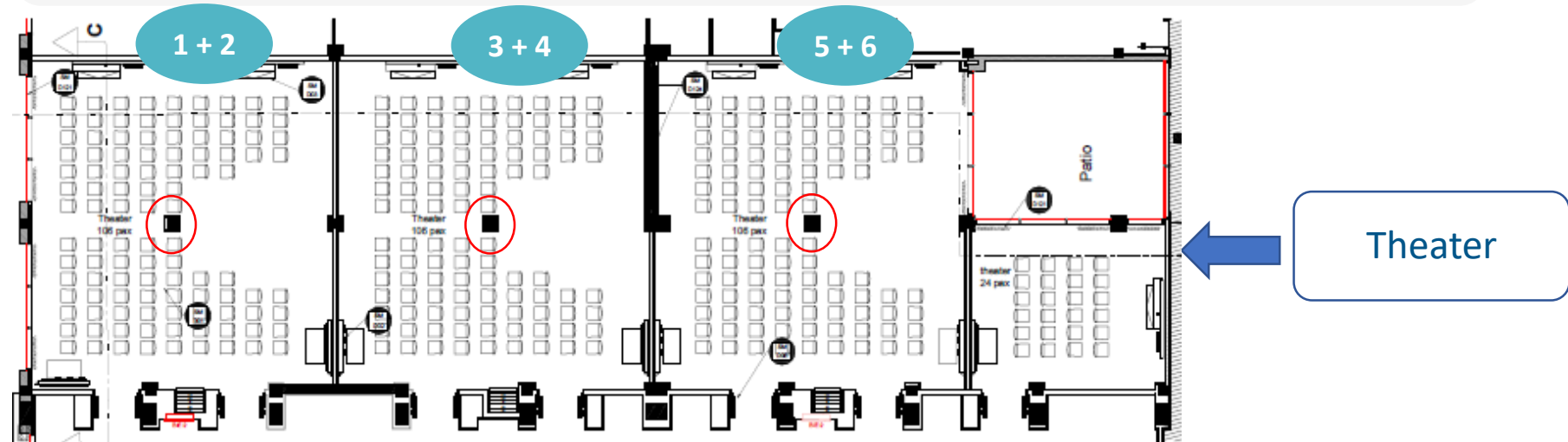


Square set up is not recommend, but possible, as the pol will remain in the center of the room and will impact almost all participants.

# M & E Offer: 7 Meetings rooms on the ground floor, connected set 3 x 2 rooms



When the 2 rooms are joined together, the center pol (circled in red) will remain in between each room. Therefore, visibility of the screens will be impacted. Some places, strongly impacted, have been taken away from full capacity.

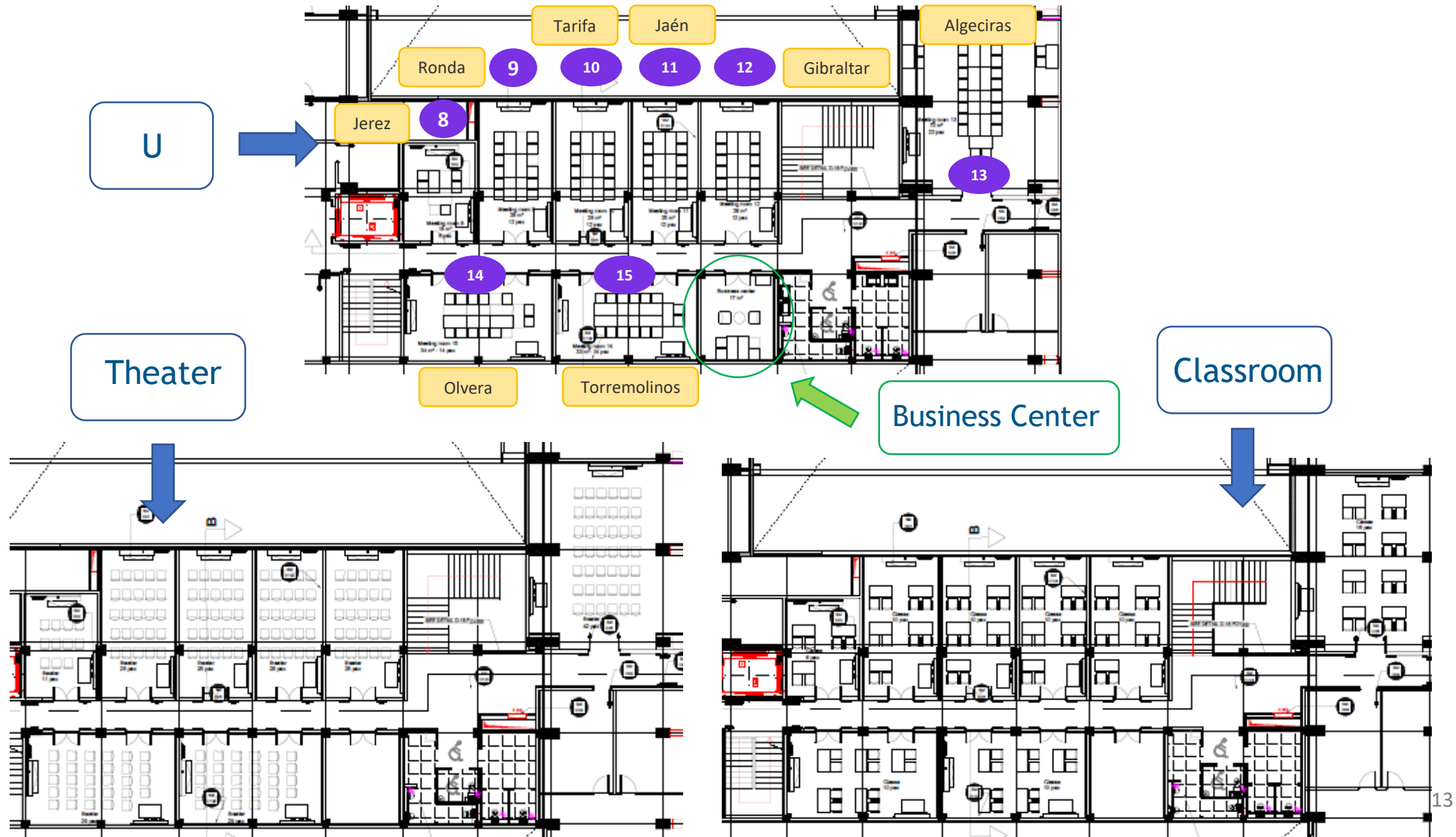




# M & E Offer: 7 Meetings rooms on the ground floor, with 3 sets of 2 ROOMS connecting to EACH OTHERS

	Dimensions				Capacity			
	Superficy	Length	Width	Hight	Theater	Classroom	Square	U
Granada	58 m <sup>2</sup>	11,30 m	4,80 m	2,90 m	60	20	28	26
Sevilla	67 m <sup>2</sup>	11,30 m	5,90 m	2,90 m	60	20	28	26
Granada + Sevilla Recommended capacity					106	34		36
Almería	62 m <sup>2</sup>	11,30 m	5,15 m	2,90 m	60	20	28	26
Málaga	66 m <sup>2</sup>	11,30 m	5,60 m	2,90 m	60	20	28	26
Almería + Málaga Recommended capacity					106	34		36
Cádiz	64 m <sup>2</sup>	11,30 m	5,50 m	2,90 m	60	20	28	26
Huelva	64 m <sup>2</sup>	11,30 m	5,50 m	2,90 m	60	20	28	26
Cádiz + Huelva Recommended capacity					106	34		36
Córdoba	40 m <sup>2</sup>	5,60 m	6,90 m	2,90 m	24	10	16	<sup>12</sup> 14

# M & E Offer: 8 Rooms located and the business center on the R+1

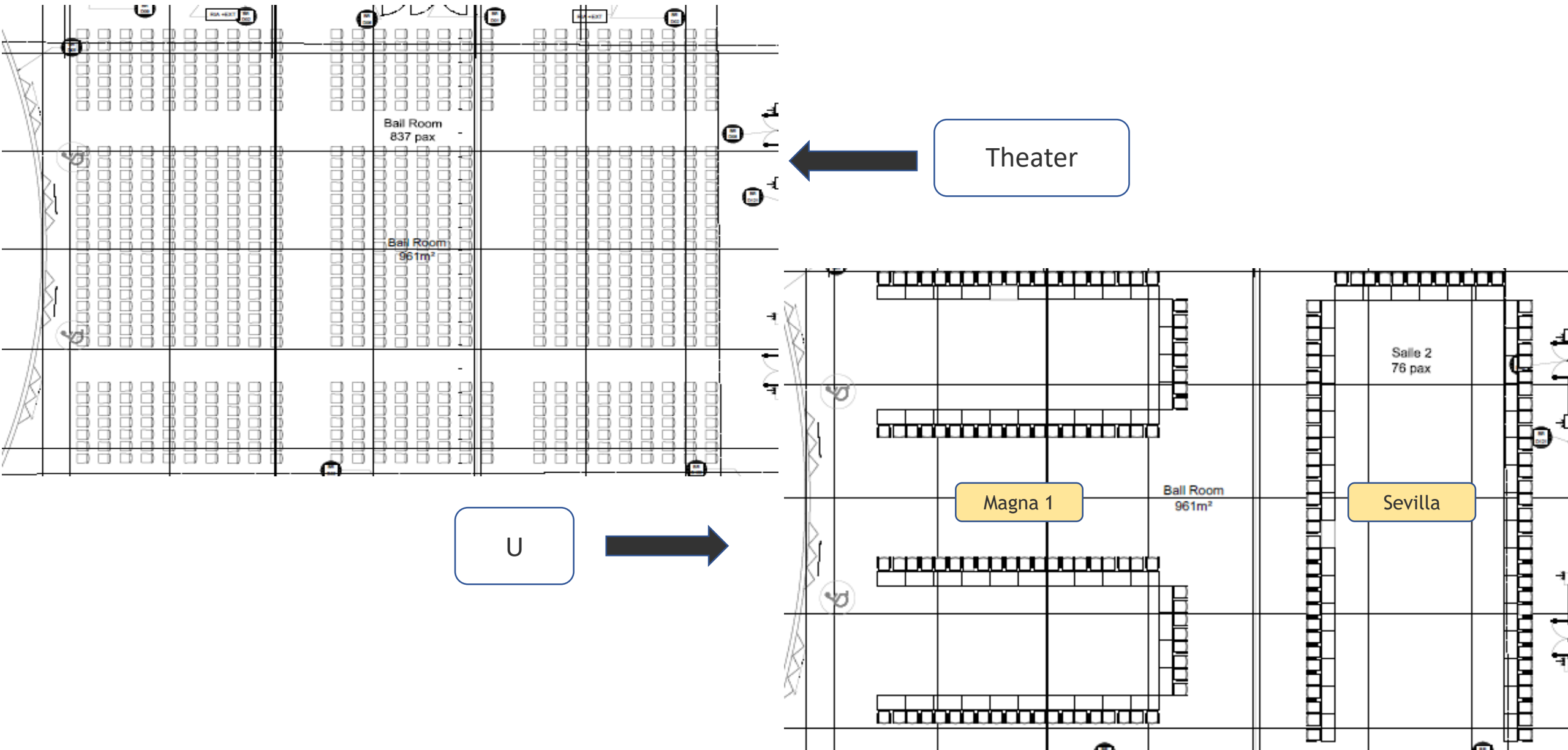


# M & E Offer: 8 Rooms located on the R+1

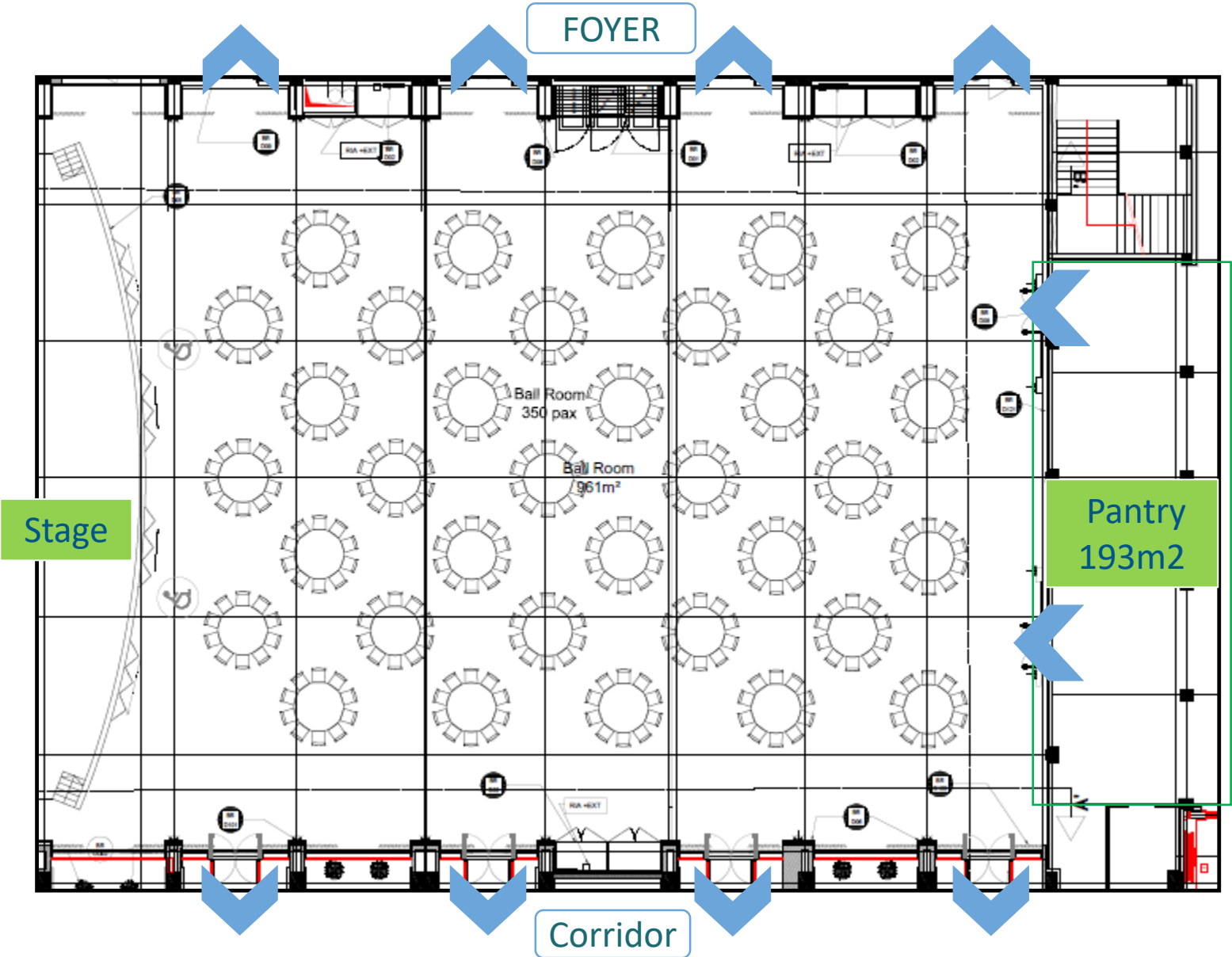


	Dimensions				Capacity			
Jerez	18 m <sup>2</sup>	5 m	3,75 m	2,60 m	11	6	8	6
Ronda	28 m <sup>2</sup>	7,30m	3,90 m	3 m	25	10	14	12
Tarifa	28 m <sup>2</sup>	7,30 m	3,90m	3 m	25	10	14	12
Jaén	25 m <sup>2</sup>	7,30 m	3,40m	3 m	25	10	14	12
Gibraltar	29 m <sup>2</sup>	7,30 m	4m	3 m	25	10	14	12
Algeciras	70 m <sup>2</sup>	9,10m	8m	2,60 m	42	16	24	22
Olvera	33 m <sup>2</sup>	7,70m	4,40m	2,60 m	29	10	16	14
Torremolinos	34 m <sup>2</sup>	7,70m	4,40m	2,60 m	29	10	16	14

# Ball room (magna room) with direct access to the foyer and the exterior corridor



# Ball room with direct access to the foyer and the exterior corridor , banquet set up



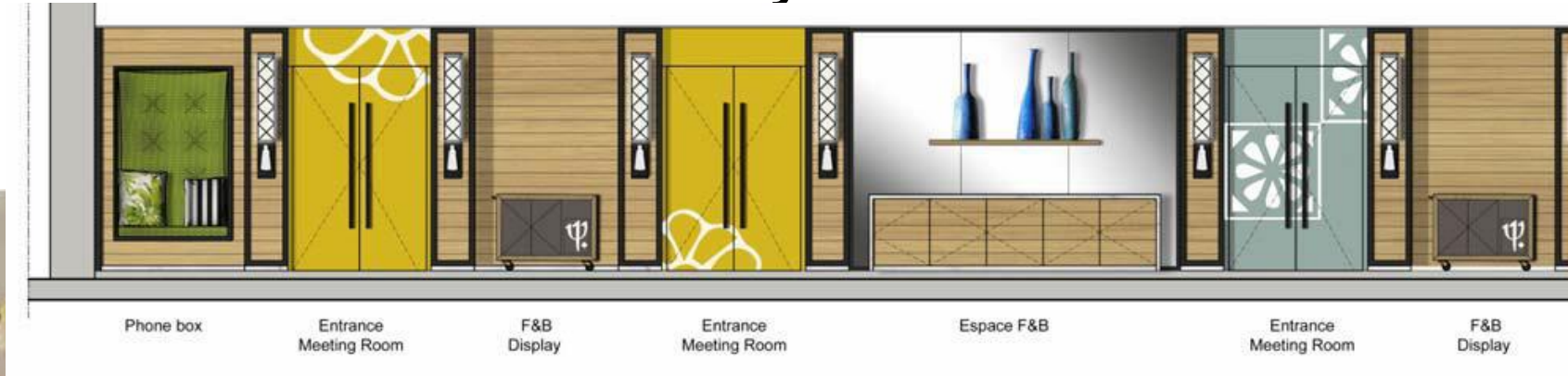




## M & E offer: ball room with direct access to the foyer and the exterior corridor

	Dimensions				Capacity				
Magna 1	596 m <sup>2</sup>	27,40 m	21 m	5 m	558	216	112	96	
Magna 2	365 m <sup>2</sup>	27,40 m	13,20 m	5 m	279	144	88	76	Banquet
Magna (1 + 2)	961m <sup>2</sup>	34,2	27,40 m	5 m	837				350

# Foyer





# Equipment in M & E rooms

- Each meeting rooms is equipped with a Working wall and Energy wall
- Each set of 2 rooms connected is equipped with a touch screen, sound system and Video projector
- F & B trolleys available in foyer or in room upon request

Energy Wall:  
revamped version  
(no plastic bottle)



Working Wall with  
touchscreens and clickshare  
connexion

F & B trolley



New  
design in  
process

## BALL ROOM EQUIPMENT:

- 1 Screen and 1 video projector for each part of the ball room
  - Sound system with Microphone for each room
- All other equipment will be rent through an external provider

# Equipment in Meetings rooms



## Equipment for rooms as individual use:

- Touch Screen of 86' all rooms except Jerez
- Touch Screen of 75' in Jerez
- Wireless projection system
- Sound displayed through a sound bar located
- HDMI, VGA, USB, Jack, RJ45

## Equipment for rooms as plenary use :

- Electric projection Screen of 240 cm x 150 cm
- Wireless projection system provided with 2 configured
- Sound displayed in the room through ceiling speakers
- 2 Wireless Microphones

# Equipment in Ball rooms

## Equipment for Ball room as plenary use :

- On main stage:
  - Electric projection Screen of 700 cm x 400 cm,
  - 2 sides screens of 295 x 166 cm
- Sound displayed in the room through ceiling speakers,4 Wireless Microphones
- Basic lights system, structure to host rented equipment
- Technical cabin available for external provider or external technicians (no technician provided by CM)

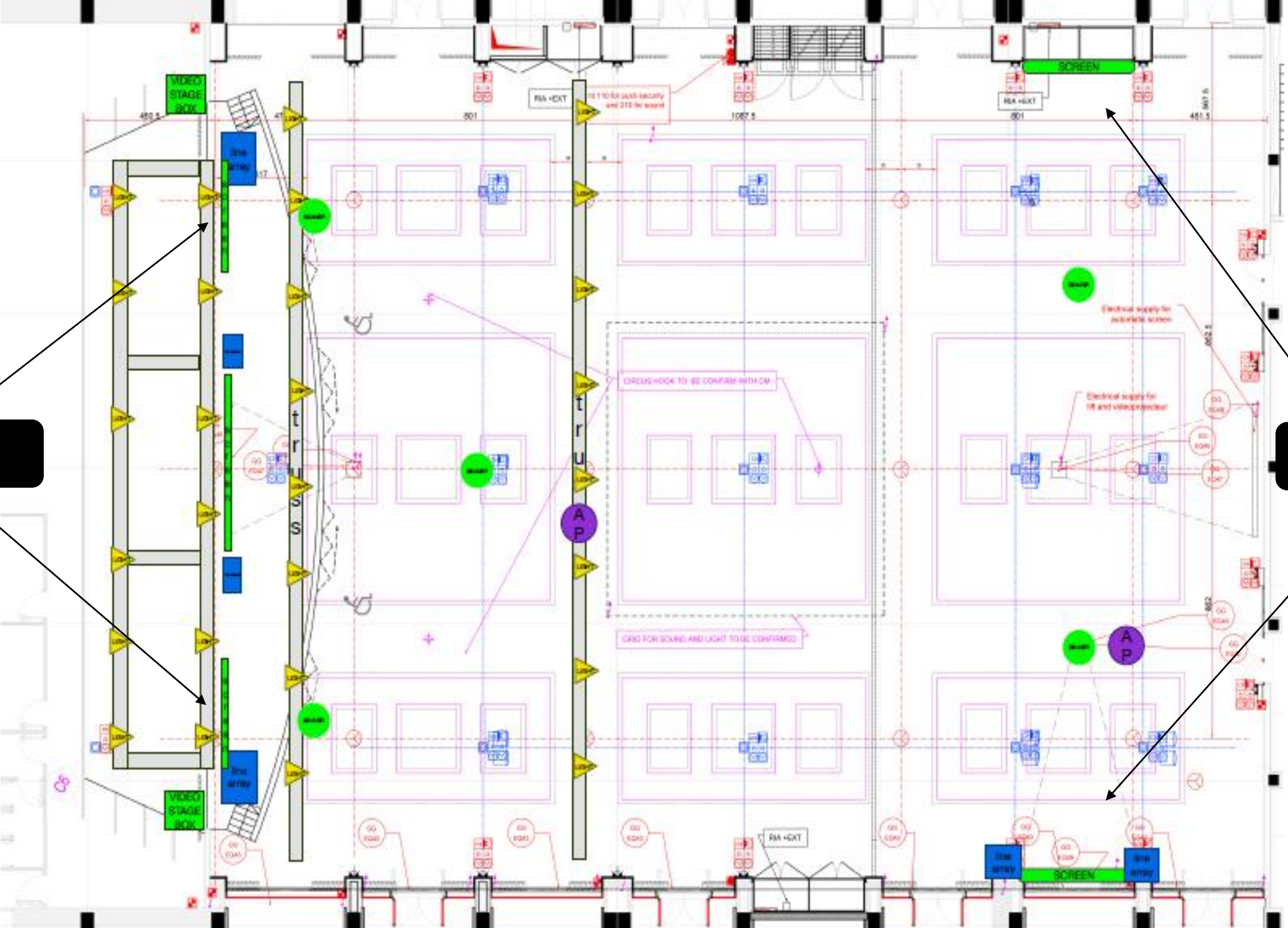
## Equipment for Ball rooms as individual use:

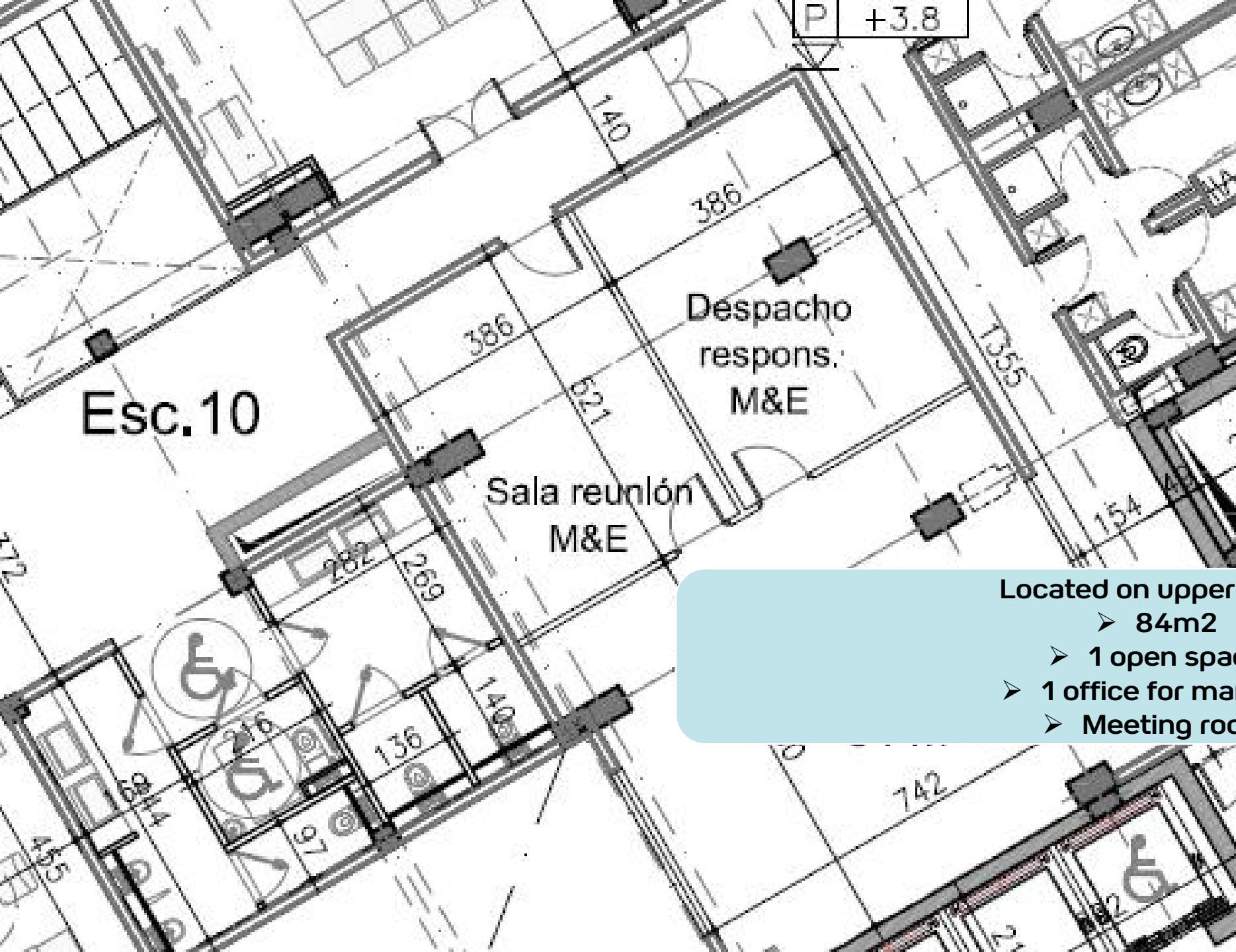
- Ball room 1: same equipment as plenary use
- Ball Room2:
  - Electric projection Screen of 240 cm x 150 cm
  - Wireless projection system provided with 2 configured
  - Sound displayed in the room through ceiling speakers
  - 2 Wireless Microphones



Screen

Screen

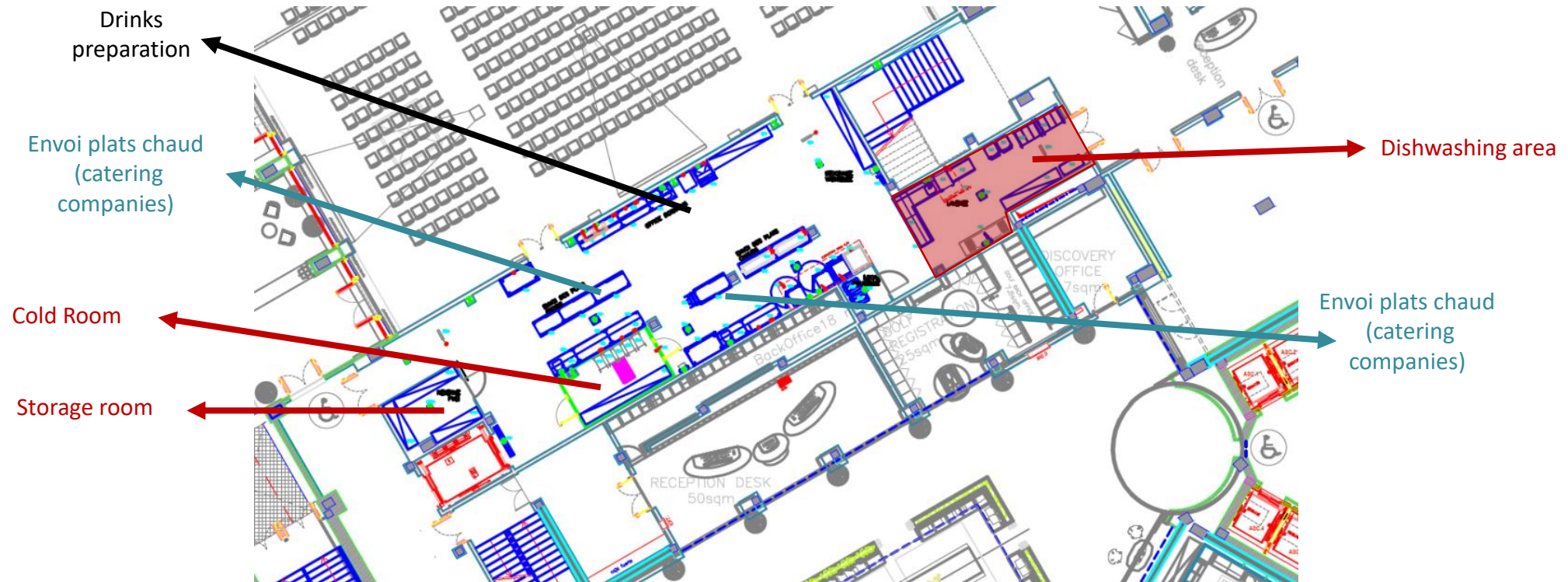




## Office Meetings & Events, R+1

- Located on upper floor:
- 84m<sup>2</sup>
  - 1 open space
  - 1 office for manager
  - Meeting room

# Pantry meeting room RDC 180 m<sup>2</sup>



## Equipment :

- Cold Room = 10m<sup>2</sup>
- Dishwasher + storage
- Stainless tables
- Storage room for SHE (PMH)

We also planned all electric sockets, water supply and extraction for catering companies.



# Mobilier



	MOBILIER	QUANTITES
BALL ROOM / Magna	Tables	180
	Chaises	837
	Rideau de Scène	inclus dans commande Audio / video
RDC	Working Wall	7
	New energy wall	7
	Tables	65
	Chaises	384
EP1	Working Wall	8
	New energy wall	7
	Tables	41
	Chaises	211
Foyer	Chariots F & B	6
Business Center	Meuble / Chariot pour imprimante / photocopieuse	1
	Mobilier	1 table ronde ou 2 tables séminaire + 4 chaises / 2 fauteuils avec table lounge
	<b>Total Tables</b>	<b>286</b>
	<b>Total Chaises</b>	<b>1432</b>